



We think **outside** the box...
and you put things **inside**.



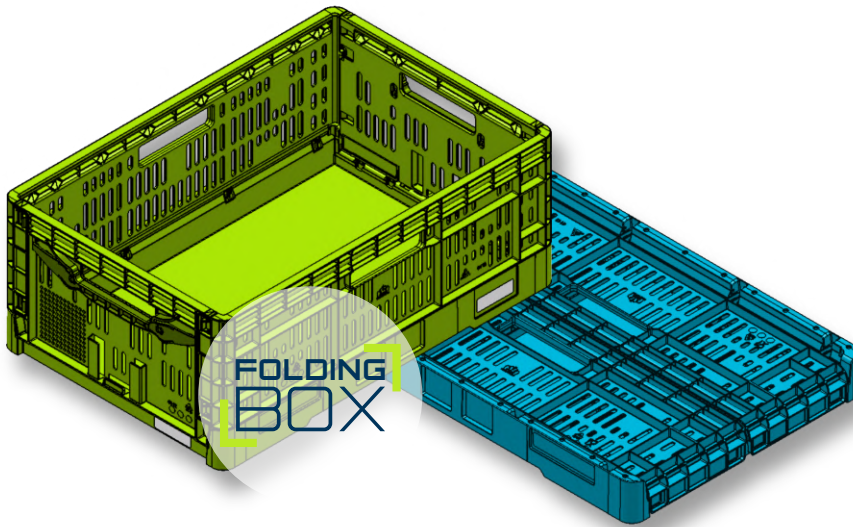
packing
& storage
solutions

www.letzpack.com

STANDARD PRODUCTS

EURONORM crates and trays
& other specific series models

LP-FB-1



600 x 400 x 240 mm



600 x 400 x 70 mm



Ribbed bottom



Open walls



Max. load 25 kg



Customized logo



Identification with IML
or adhesive labels

 Robust handles and folding system



Storage volume divided by 3 with folded boxes

LP-BO-1



400 x 300 x 165 mm



Max. load 15 kg



Ribbed bottom



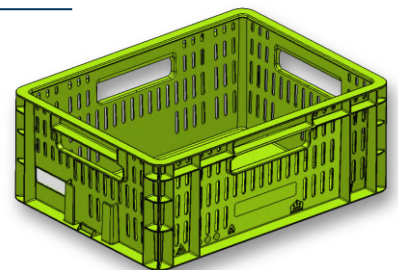
Customized logo



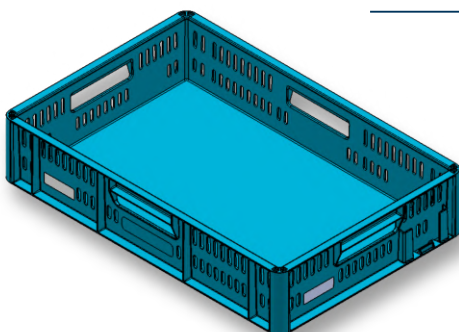
Open walls



Identification with IML
or adhesive labels



LP-BO-2



600 x 400 x 125 mm



Max. load 25 kg



Ribbed bottom



Customized logo

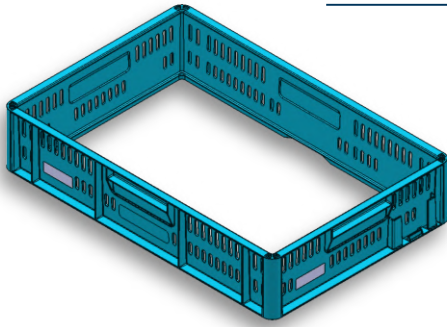


Open walls



Identification with IML
or adhesive labels

LP-FR-1



 600 x 400 x 125 mm

 Identification with IML or adhesive labels

 Open walls

 Customized logo

LP-BO-3

 600 x 400 x 143 mm

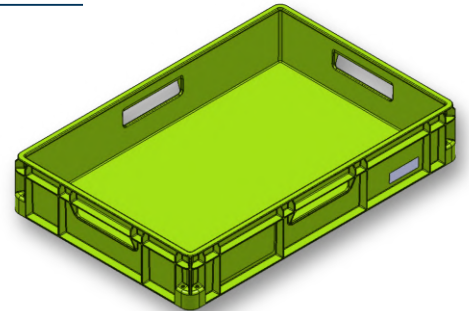
 Max. load 60 kg

 Ribbed bottom

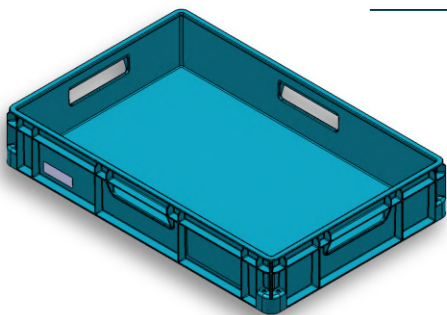
 Customized logo

 Closed walls

 Identification with IML or adhesive labels



LP-BO-4



 600 x 400 x 120 mm

 Max. load 60 kg


 Ribbed bottom

 Customized logo

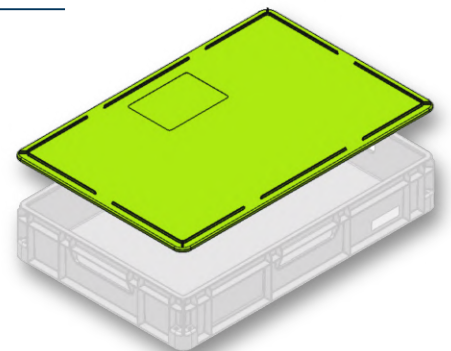
 Closed walls

 Identification with IML or adhesive labels

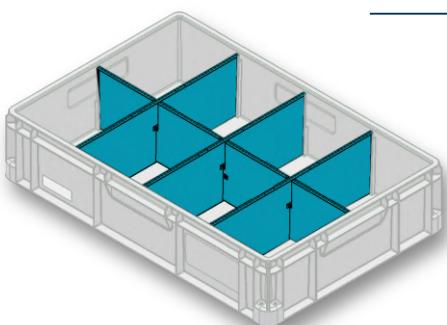
LP-LI-1


 Lids for boxes 600 x 400 mm

 Customized logo

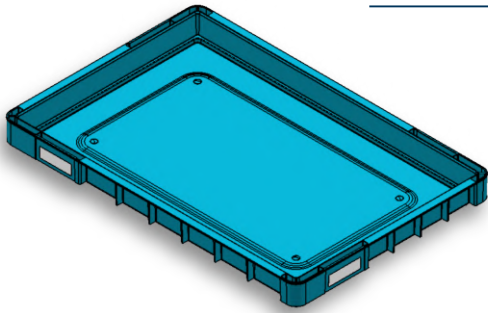


LP-AC-1




 Dividers for boxes 600 x 400 x 143 mm

 From 2 to 8 compartments

LP-TR-1

 600 x 400 x 50 mm

 Identification with IML or adhesive labels

 Flat bottom


 Max. load 15 kg

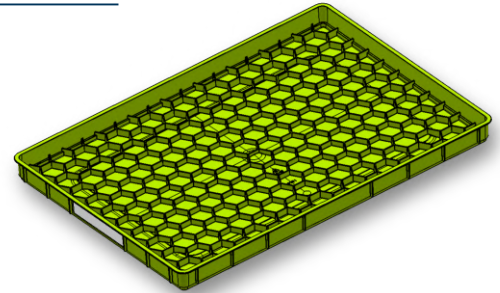
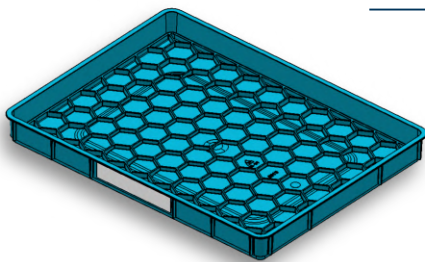
LP-TR-2


 625 x 425 x 40 mm


 Identification with adhesive labels

 Ribbed bottom

 Max. load 30 kg

**LP-TR-3**

 425 x 325 x 40 mm


 Identification with adhesive labels

 Ribbed bottom

 Max. load 15 kg

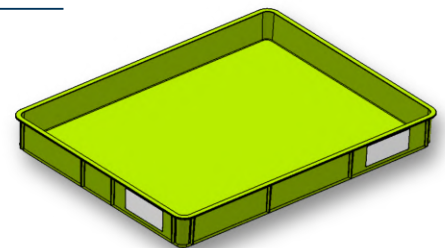
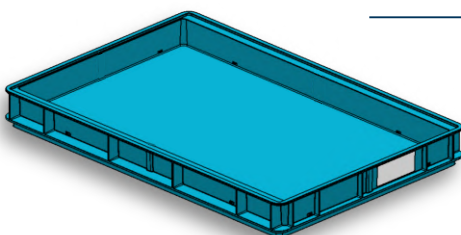
LP-TR-4

 425 x 325 x 50 mm


 Identification with adhesive labels

 Ribbed bottom

 Max. load 15 kg

**LP-TR-5**

 520 x 350 x 55 mm

 Identification with adhesive labels

 Ribbed bottom

 Design with or without drain holes

 Max. load 34 kg

CUSTOM PRODUCTS

Your satisfaction, our motivation
Your expectation, our solution

From your idea to serial production



Wide color range



Individual design



Tailored dimensions



Customized logos and labels

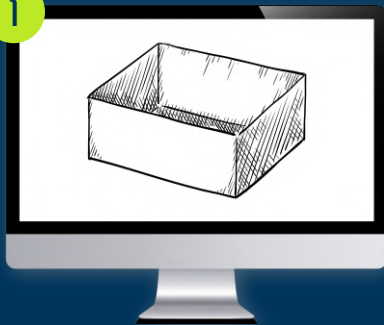


Wide range of applications



Individual testing

1



Your idea

Your requirements are analyzed and formalized in detailed specifications.

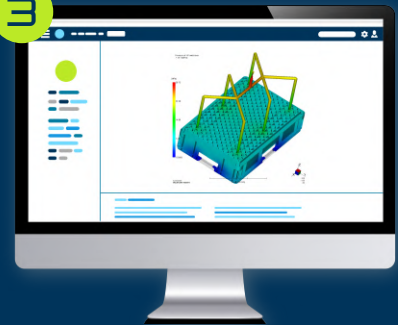
2



3D design

Technical drawings and 3D modelization offer a first insight of your product.

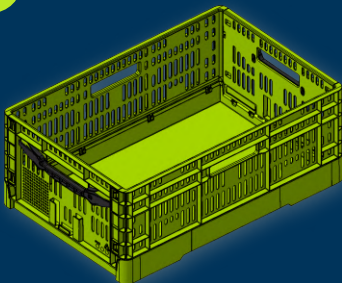
3



Simulations & analyses

Simulation and validation of plastic flow behavior, resistance and stress.

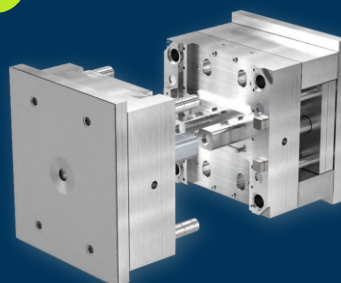
4



Prototyping

Checking of technical and appearance conformity and accuracy of the product.

5



Tool construction

In-house workshop for construction, modification and repair of injection molds.

6



Serial production

After customer approval of the tool and samples, serial production can start.

PRODUCT DEFINITION

Let's discuss about your needs !

We are committed to providing you with the best possible solution, with custom-made products adapted to your needs and to your environment. Please fill in this questionnaire so we will design a product that perfectly match your requirements.

What kind of product are you looking for?

- Collapsible Container Container Tray
- Accessories: Lid Partition walls Other _____

What is the main application of the product?

- Intralogistics Automotive Food application Industry & mechanical
- Pharma Electronics Multipurpose Other _____

What would be the size of the product (mm)?

- Length: 200 300 400 600 Specific size _____
- Width: 150 200 300 400 Specific size _____
- Height: 40 50 120 170 Specific size _____

What kind of features do you need?

- The product should be: Nestable Stackable
- Handgrips: None Two Four and Open or Closed
- Drainage holes: With Without
- Slot for partition walls: With Without
- Label areas for stickers: No Yes Smooth surface Dimpled surface
- Long side Short side Both sides
- Label holder: No Yes Long side Short side Both sides

What colour should be the product?

Black (RAL 9011) Grey (RAL 7035) Blue (RAL 5015) Other _____

Do you need to identify your product?

With a Logo: No Yes

With coding or tracking: No Yes Barcodes Datamatrix RFID

If Yes: In-Mold Labelling Stickers

Long sides (2) Short sides (2) Both sides (4)

What would be the load capacity of the product?

What kind of products would you put in the container? _____

Max load expected (kg): _____ Max deformation of the bottom (mm): _____

How would be the load distributed in the container: _____

What would be the environment of the product?

Mainly Indoor Mainly Outdoor Both

Temperature of service (°C): Main _____ Max _____ Min _____

Cleaning - sterilization process: No Yes Temperature _____ Duration _____

Chemical resistance: Solvents Grease Oils Cleaning agent Other _____

Special environment: UV resistant Flamme resistant Antistatic (ESD) Other _____

Specific standards or regulations to follow: _____

Material defined: PP HDPE ABS Recycled material Other _____

How many products do you need and when?

Quantity: _____

Delivery time: _____

Any additional information that would help us to design the product?

From standard products to fully customized solutions.

With nearly 50 years of experience in the field of plastic injection molding, we offer high-quality products and dedicated services to our customers.

We are your partner for developing innovative and customized intralogistic solutions, helping to translate your packaging needs into well-designed, reliable and sustainable products.



3 production plants in Luxembourg, Bulgaria & Czech Republic, with more than 80 injection machines & 425 employees.



Expertise in injection of many plastic materials: PP, HDPE, ABS, recycled and biosourced materials...



Made in Luxembourg. Certifications ISO 9001 & IATF 16949:2016. Products compliant with ISO 18616 / 19709.

Your contacts



Eric Thiel
Sales Manager
e.thiel@letzpack.com
+352 36 70 62 316



Marcel Gädicke
Product Manager
m.gadicke@letzpack.com
+352 36 70 62 342



We think **outside** the box...
and you put things **inside**.



15 allée de la Poudrerie
L-1899 Kockelscheuer
Luxembourg